

/ BIODIGESTING

# Harp Renewables CX-20

## WATERLESS AEROBIC BIODIGESTER



MASTER DISTRIBUTOR OF HARP RENEWABLES

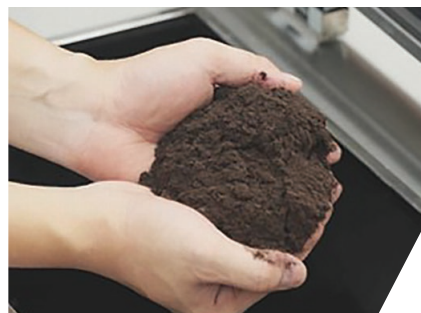
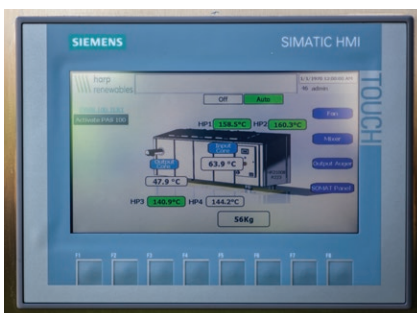
Clear the table and the landfill with this workhorse of a machine.

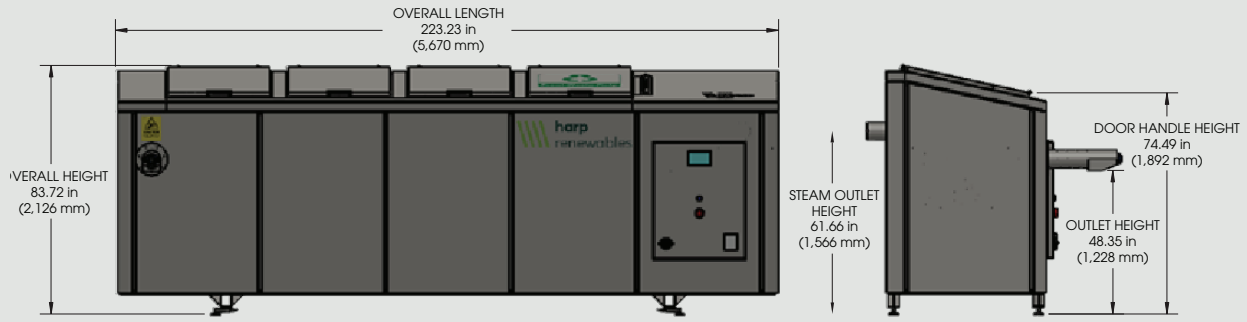


**This on-site, continuous-feed biodigester converts food waste into a nutrient-rich soil amendment in 24 hours, without water.**

### / QUICK STATS

- Process food waste, including meat, shells and bones. BPI certified products can be accepted
- Material is heated to 160° F to kill pathogens and toxins, while enzymes, rotation, and airflow create optimal decomposition
- Produce a stable, nutrient-rich, high-value amendment for compost or soil for optimized plant growth





## HARP RENEWABLES CX-SERIES BIODIGESTERS / Technical Specifications

Machine Model	CX-1	CX-2	CX-5	CX-10	CX-20	CX-50
<b>Power</b>						
Electric Input:	3-Phase + Neutral	3-Phase + Neutral	3-Phase + Neutral	3-Phase + Neutral	3-Phase + Neutral	3-Phase + Neutral
Voltage:	208 or 240V	208 or 240V	208 or 240V (or 480V)	480V	480V	480V
Current:	16A	16A	25A (or 63A)	40A	63A	160A
<b>Proportion</b>						
System Footprint (LxWxH):	51" x 43" x 47" (1.3 x 1.1 x 1.2 m)	75" x 51" x 47" (1.9 x 1.3 x 1.2 m)	147" x 67" x 59" (3.7 x 1.7 x 1.5 m)	197" x 70" x 74" (5 x 1.78 x 1.88 m)	225" x 87" x 85" (5.7 x 2.2 x 2.15 m)	315" x 205" x 98" (5.7 x 2.2 x 2.15 m)
<b>Performance</b>						
Max. Daily Input Volume	~38 gal (142 liters)	~75 gal (285 liters)	~189 gal (714 liters)	~377 gal (1,428 liters)	~755 gal (2,857 liters)	~1,887 gal (7,143 liters)
Max. Daily Input Weight	~157 lbs (71 kg)	~315 lbs (143 kg)	~787 lbs (357 kg)	~1,574 lbs (714 kg)	~3,150 lbs (1,429 kg)	~7,875 lbs (3,572 kg)
Monthly Input Capacity <sup>1</sup>	4,762 lbs (2,160 kg)	9,546 lbs (4,330 kg)	23,810 lbs (10,800 kg)	47,840 lbs (21,700 kg)	95,460 lbs (43,300 kg)	238,761 lbs (108,300 kg)
Monthly Bioproduct Production <sup>2</sup>	1,433 lbs (650 kg)	2,866 lbs (1,300 kg)	7,165 lbs (3,250 kg)	14,330 lbs (6,500 kg)	28,660 lbs (13,300 kg)	71,650 lbs (32,500 kg)

<sup>1</sup> 30-day month    <sup>2</sup> Assumes 75% waste conversion; 25% end bioproduct material by weight.

Think Viably for industry expertise, world-class products, parts, service, and support.

Wherever you work.



CONSTRUCTION AND DEMOLITION (C&D)



MUNICIPAL SOLID WASTE (MSW)



ORGANICS AND FOOD WASTE



SINGLE-STREAM RECYCLING



Scan to see the CX-20 in action >

